



The flexible, high performance CO<sub>2</sub> laser solution

**3130 and 3330**

**Laser Marking Systems**



## Contents

|         |   |
|---------|---|
| 6 - 7   | <b>Addressing your production realities</b>           |
| 8 - 9   | <b>Introducing the new CO<sub>2</sub> lasers</b>      |
| 10 - 11 | <b>Wavelength selection for substrates</b>            |
| 12 - 13 | <b>Quick and easy integration</b>                     |
| 14 - 15 | <b>Line set-up made easy</b>                          |
| 16 - 17 | <b>Configuration flexibility</b>                      |
| 18 - 21 | <b>Impact of coding errors and how to reduce them</b> |
| 22 - 23 | <b>Coding more efficiently</b>                        |





Laser marking – specifying excellence



**For crisp, high quality  
codes you need performance  
you can rely on**

Your goals

**100% uptime  
Maximum throughput  
Consistent print quality**

Your reality

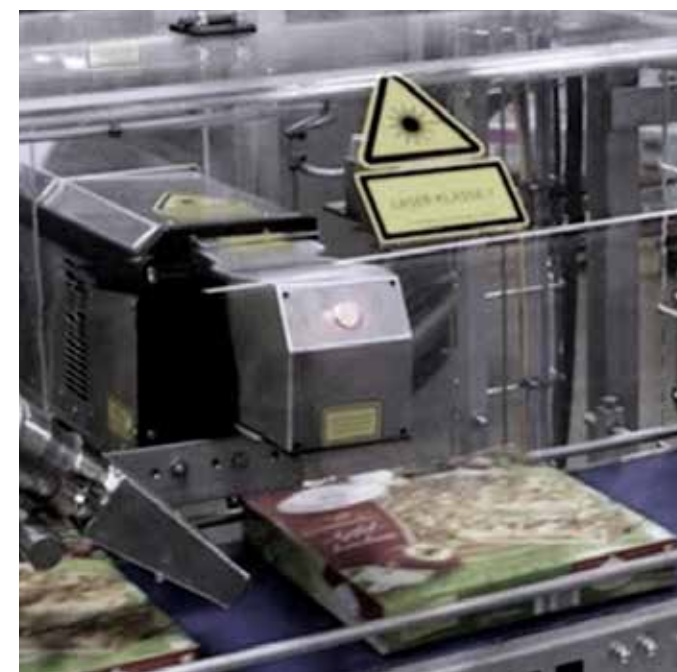
- Downtime when you can least afford it
- Coding systems poorly integrated into your lines
- Code legibility sacrificed to maintain line speed
- Inefficient line changeovers



# Addressing your production realities

## The ideal supplier...

- 1 Offers multiple, standard configurations to integrate with the realities of your lines
- 2 Understands interaction of laser energy and your packaging materials to configure the right solution
- 3 Provides solutions that **improve productivity and throughput**
- 4 The necessary accessories for a complete solution



**Integration, configuration and application expertise matter – not all lasers of a given power are the same**

## Introducing the new 3130 and 3330 Lasers



### Uptime advantage

**Maximize printer availability with long-life, air-cooled laser sources that virtually eliminate maintenance intervals. Available line set-up wizard minimizes planned downtime during changeovers**

### Simple usability

**Over 20,000 standard configurations available to ensure a seamless fit into your packaging line**

### Code Assurance

**CLARiTY Laser Controller is engineered to minimize coding mistakes and assure the right code is on the right package**

### Built-in productivity

**Large selection of mark windows provides more time to mark, increasing throughput and productivity**





# Introducing the new CO<sup>2</sup> Laser Marking System

## Designed for high performance...

- Throughput up to 100,000 products per hour
- Large selection of mark window options for increased marking speed and efficiency
- Virtually no maintenance and limited consumables
- Configured for optimal power settings, reducing heat and extending laser source life

## ...and flexibility

- Over 20,000 ways to configure the optimum laser solution
- Multiple wavelength options to match substrate requirements
- Integration features for fast install and set-up
- Virtually no font, code or graphics restrictions



# Three standard wavelengths for broadest substrate coverage

10.6µm

Standard consumer packaging including paperboard, cardboard, various plastics and labels, as well as wood, glass and painted metal products

10.2µm\*

Laminated cartons typical in cosmetic and Life Sciences applications, PVC and other plastics

9.3µm

PET bottling, plastic labels and Biaxially Oriented Polypropylene films (BOPP)



\*10.2µm only available in 30 Watt model



# Quick and easy integration

Uptime Advantage

Simple Usability

Code Assurance

Built-in Productivity

## New 'quick disconnect' umbilical cable

- Available in three lengths
- Easy routing of the cable during installation
- Speeds up line change over process



## Standard industrial connectors for easier integration

Available in both standard and IP65 rated models



# Line Set-Up Wizard for faster changeovers

Uptime Advantage

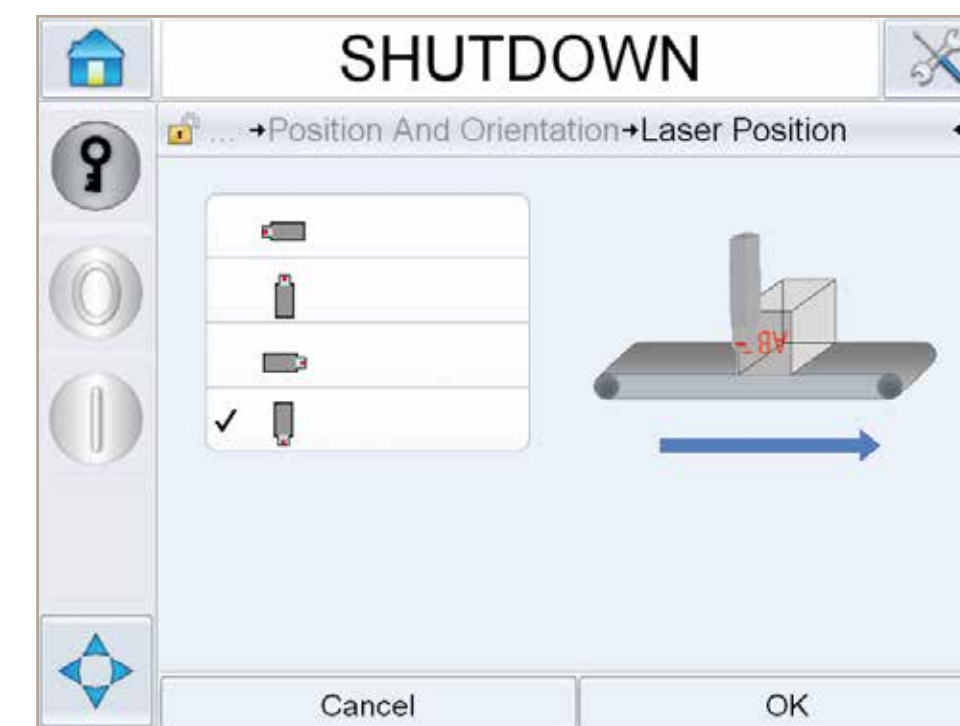
Simple Usability

Code Assurance

Built-in Productivity

**Greatly simplifies initial configuration and subsequent changeovers, reducing steps by 33%**

- Process is displayed in a step-by-step logical sequence
- Production line elements displayed graphically to speed process and avoid errors
- Uses actual inputs from the production line to make automatic calculations
- Facilitates quick changes to laser position and code orientation



Select new laser position



After - vertical



# Flexibility comes as standard

Over 20,000 standard configurations deliver the flexibility for your exact application needs

Uptime Advantage

Simple Usability

Code Assurance

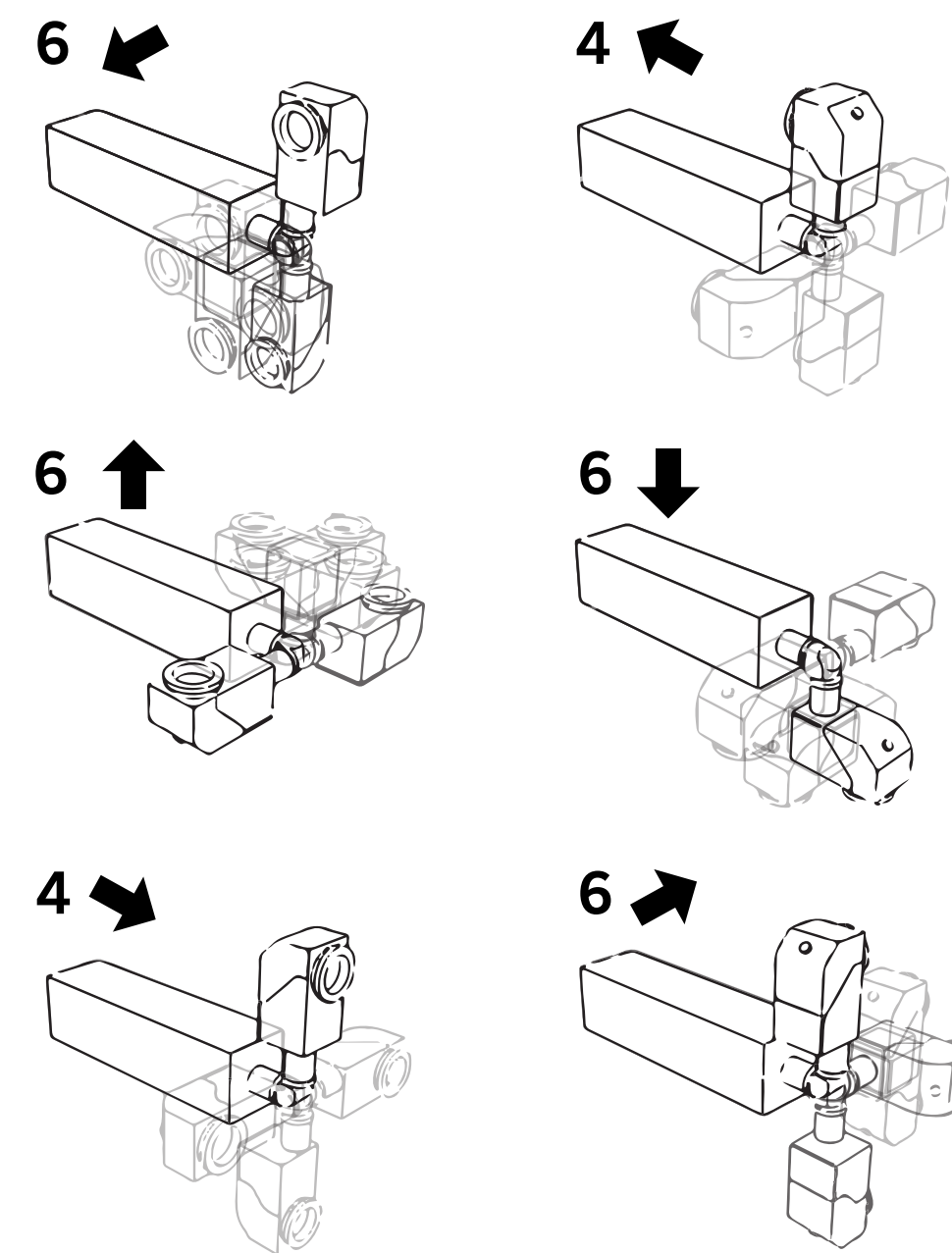
Built-in Productivity

## Flexibility comes as standard

- 32 Marking head positions
- 21 Mark windows
- 3 Wavelengths
- 2 IP ratings for marking units (IP54, IP65)
- 3 Detachable umbilical lengths
- 2 Power options (10W or 30W)

**= The most innovative laser system on the market**

## Positioning the beam where needed



**= 32** standard beam delivery options for marking head positioning



# The impact of coding errors

Uptime Advantage

Simple Usability

Code Assurance

Built-in Productivity

**50%-70%**  
of coding errors are due to operator error



Effects are felt all the way from the packaging line to the retail shelf



## Internal rework

- Wasted product
- Wasted packaging
- Decreased efficiency



## External – Damaged customer relations

- Supply chain disruption
- Product recalls
- Potential fines or other compensation

Code editing:  
It's hard to get wrong

## Visual job selection

**RUNNING**

Job Select

APPLE JUICE

**LIME JUICE**

ORANGE JUICE

Type:Lime Ju  
BEST BY:17/0

Cancel OK

## Step-by-step guided entry

**RUNNING**

Job Select→LIME JUICE

✓ Expiration Date  
17 Jan 2013

○ Product Type  
Lime Juice

Type:Lime Ju  
BEST BY:17/0

Cancel Edit OK

## Minimal choice for minimal errors

**RUNNING**

Job Select→LIME JUICE→Expiration Date

◀ Jan 2013 ▶

|     |     |     |     |     |     |     |           |
|-----|-----|-----|-----|-----|-----|-----|-----------|
| Mon | Tue | Wed | Thu | Fri | Sat | Sun | Today     |
|     | 1   | 2   | 3   | 4   | 5   | 6   | 17        |
| 7   | 8   | 9   | 10  | 11  | 12  | 13  | Default   |
| 14  | 15  | 16  | 17  | 18  | 19  | 20  | Days Off  |
| 21  | 22  | 23  | 24  | 25  | 26  | 27  | +10       |
| 28  | 29  | 30  | 31  |     |     |     | Months Of |
|     |     |     |     |     |     |     | +0        |
|     |     |     |     |     |     |     | Years Of  |
|     |     |     |     |     |     |     | +0        |

Cancel OK

## Print layout preview for confirmation

**RUNNING**

Job Select→Orange Juice→Preview

Type:ORANGE JU  
BEST BY:10/01/15

Cancel OK



# Availability metrics at your fingertips

Quickly get a sense if you're meeting your availability targets

- Uptime Advantage
- Simple Usability
- Code Assurance
- Built-in Productivity

## Two types of availability are displayed

|  |                          |                      |  |
|--|--------------------------|----------------------|--|
|  | RUNNING                  |                      |  |
|  | Performance→Availability |                      |  |
|  | Timeframe                | Printer Availability | Operational Availability "Power On" time |
|  | Last 30 days             | 100.0% >             | 99.1% >                                  |
|  | Last 90 days             | 100.0% >             | 99.1% >                                  |
|  | Current Month            | 99.8% >              | 98.8% >                                  |
|  |                          |                      |  |
|  |                          |                      |  |
|  | Production Time Proxy    |                      | Export to USB                            |

Operation availability will always be a lower number

1. Laser availability tracks downtime directly related to a laser fault

2. Operation availability adds in procedural errors like temperature of the marking head is too high

## Actionable data

|  |   |                  |                                  |
|--|---|------------------|----------------------------------|
|  | RUNNING   |                  |                                  |
|  | Performance→Availability→Fault Pareto               |                  |                                  |
|  | May 2012, Operational Availability (Jets On): 98.5% |                  |                                  |
|  | Fault Type  | Downtime (mm:ss) | Frequency                        |
|  | (E6008) EHT/HSV Trip                                | 72:00            | 6 >                              |
|  | (E6014) Unable To Control Viscosity                 | 300:00           | 1 >                              |
|  |   |                  |                                  |
|  | Sort By   | Change Timeframe | Printer/Operational Availability |

See the biggest drivers of downtime

Take action to eliminate the root cause and achieve sustainable improvements

|  |   |       |                  |
|--|---|-------|------------------|
|  | RUNNING                                     |       |                  |
|  | Performance→Availability→Fault Pareto→Event |       |                  |
|  | May 2012 : (E6008) EHT/HSV Trip             |       |                  |
|  | Date  | Time  | Duration (mm:ss) |
|  | 10/05/2012                                  | 23:00 | 12:00 >          |
|  | 10/05/2012                                  | 22:48 | 12:00 >          |
|  | 10/05/2012                                  | 22:36 | 12:00 >          |
|  | 10/05/2012                                  | 22:24 | 12:00 >          |
|  | 10/05/2012                                  | 22:12 | 12:00 >          |
|  |   |       |                  |

Review frequency and duration

|  |  |            |                           |
|--|--|------------|---------------------------|
|  | RUNNING  |            |                           |
|  | Fault Pareto→Event→Parameters                      |            |                           |
|  | May 2012 : (E6008) EHT/HSV Trip: 10/05/2012: 23:00 |            |                           |
|  | Parameter  | Event Time | 1 min before 5 min before |
|  | Target Pressure                                    | 2.60bar    | 2.70bar 2.80bar           |
|  | Temperature Compensated Target Pressure            | 3.00bar    | 3.00bar 3.00bar           |
|  | Actual Pressure                                    | 2.60bar    | 2.70bar 2.80bar           |
|  | Head Temperature                                   | 33.0°      | 33.0° 33.0°               |
|  | Nozzle Temperature                                 | 32.0°      | 32.0° 32.0°               |
|  |  |            |                           |
|  | Go to Event Log                                    |            |                           |

Diagnose root cause, make process improvements



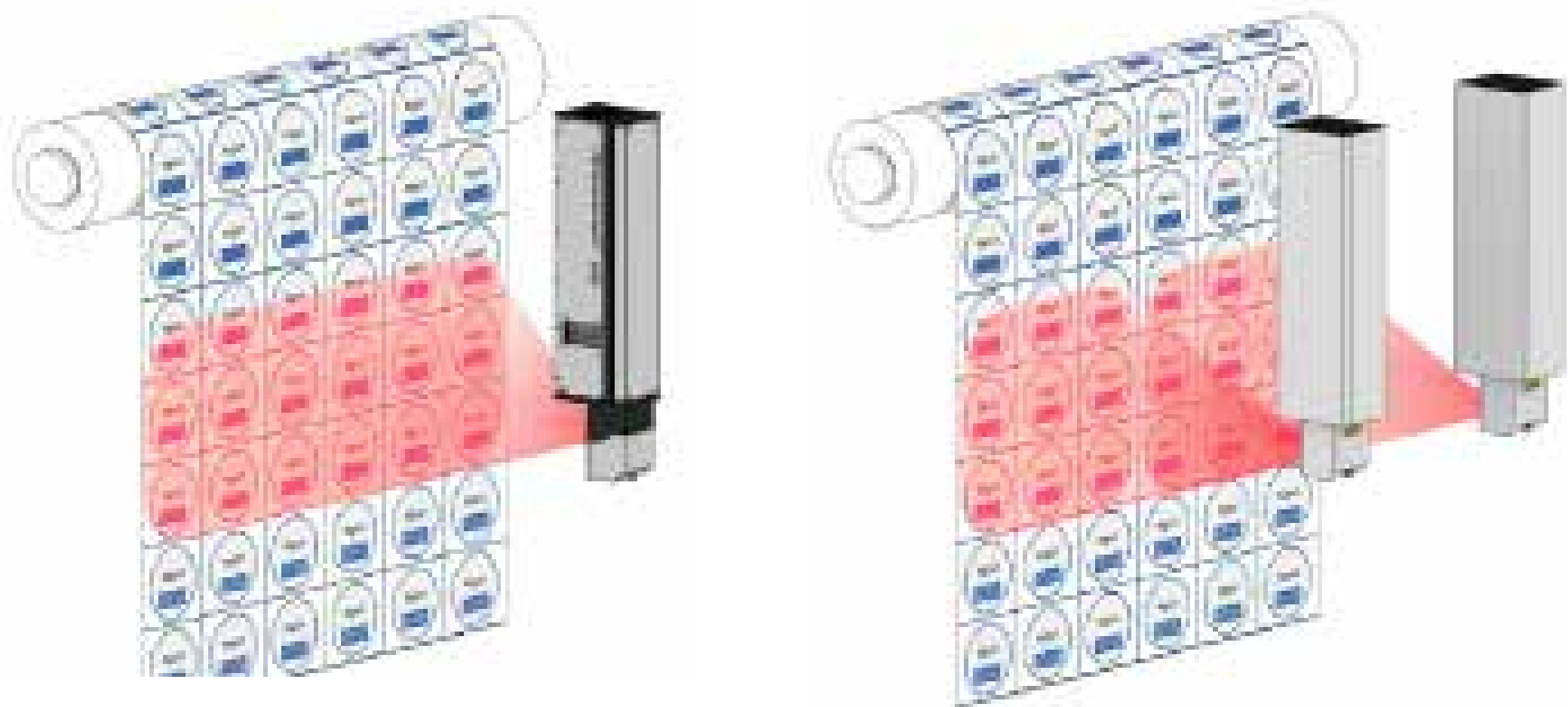
# Code more efficiently with larger mark windows

Uptime Advantage

Simple Usability

Code Assurance

Built-in Productivity



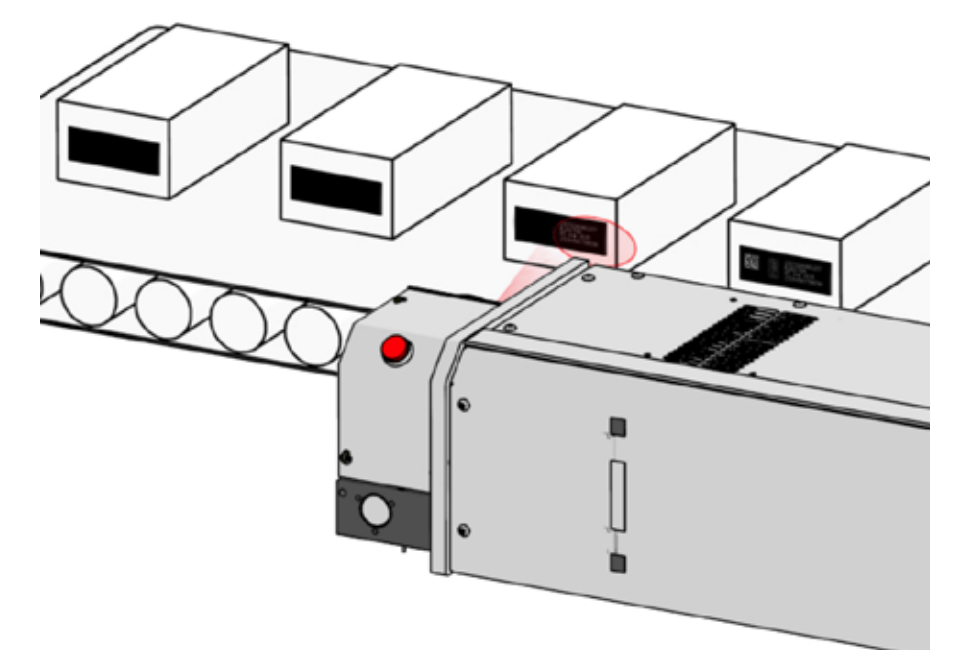
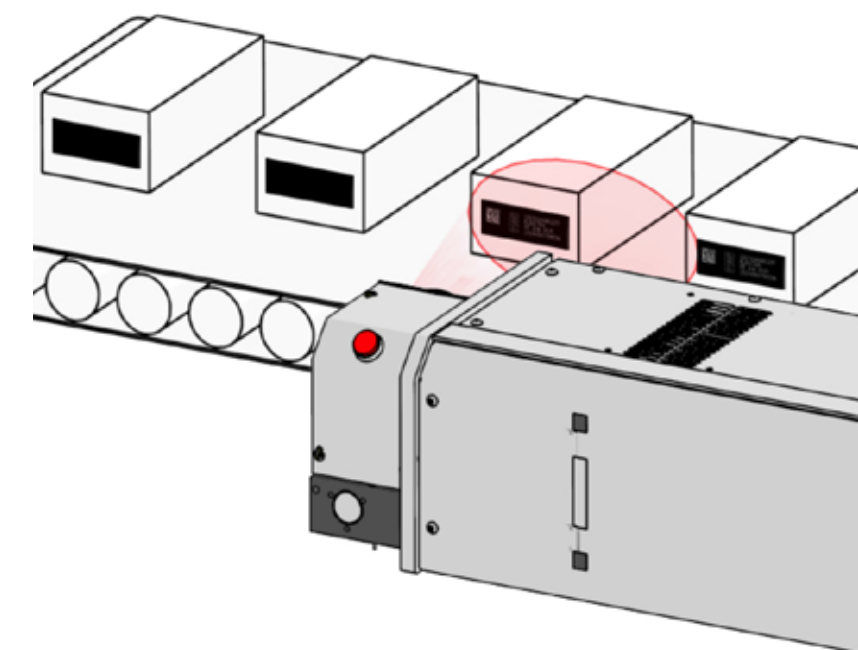
**One** Videojet laser with  
485mm wide mark window

**Two** lasers using  
340mm wide mark window

---

Larger mark windows allow certain  
applications to be addressed with one laser

---



Matching the optimum mark window to your product pitch ensures  
the maximum engagement time resulting in higher throughput.

---

**With a large selection of mark window options,  
Videojet can more precisely match your  
application and help you run faster**

---



# Videojet - committed to developing advanced laser solutions since 1985

- Uptime Advantage
- Simple Usability
- Code Assurance
- Built-in Productivity



**Beverage**  
PET bottles



**Pharmaceutical & Cosmetics**  
Laminated cartons



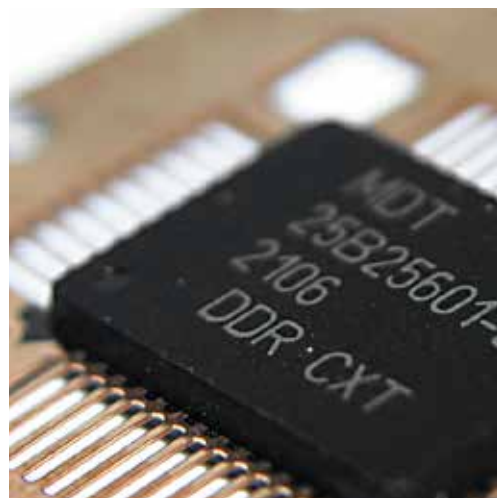
**Dairy**  
Discrete container & web applications



**Extrusion**  
PVC pipe



**Baked Goods & Cereals**  
Cartons



**Electronic**  
Metal components

## Designed for your goals. Built for your reality

| Uptime advantage  | Simple usability   |
|---|--|
| Maximize printer availability with long-life, air-cooled laser sources that virtually eliminate maintenance intervals | Over 20,000 standard configurations available to ensure a seamless fit into your packaging line    |
| Code Assurance  | Built-in productivity  |
| CLARiTY Laser Controller is engineered to minimize coding mistakes and assure the right code is on the right package  | Large selection of mark windows provides more time to mark, increasing throughput and productivity |

Call **800-843-3610**  
Email **info@videojet.com**  
or visit **www.videojet.com**

Videojet Technologies Inc.  
1500 Mittel Blvd. Wood Dale IL 60191 / USA

©2014 Videojet Technologies Inc. — All rights reserved.

Videojet Technologies Inc.'s policy is one of continued product improvement.  
We reserve the right to alter design and/or specifications without notice.

